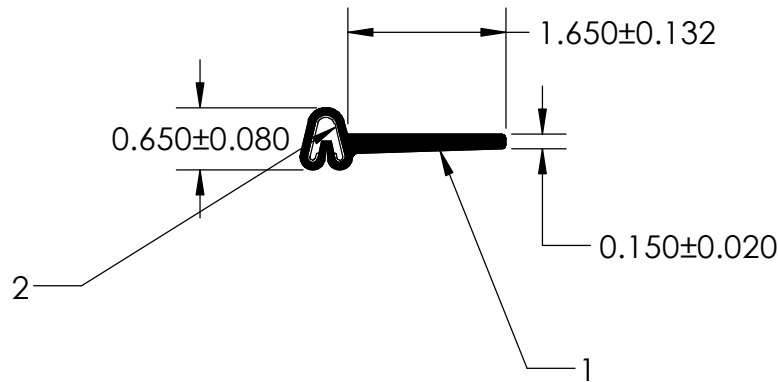
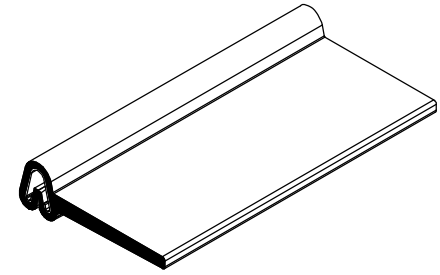


NOTES:

1) CLOSED CELL SPONGE RUBBER (DENSITY 0.725 G/CM³)

2) SD-487 SPRING STEEL (0.030 LB/FT)



UNI-GRIP, INC.

9823 STATE ROUTE 53 N
UPPER SANDUSKY, OHIO 43351

| | | | | |
|--|--|--|--------------------------------|------------------|
| PROPRIETARY AND CONFIDENTIAL: THE INFORMATION CONTAINED IN THIS DRAWING IS THE SOLE PROPERTY OF UNI-GRIP, INC. ANY REPRODUCTION IN PART OR AS A WHOLE WITHOUT THE WRITTEN PERMISSION OF UNI-GRIP, INC. IS PROHIBITED. | UNLESS OTHERWISE SPECIFIED: DIMENSIONS ARE IN INCHES TOLERANCES PER ARPM CLASS 3 | TITLE: SD-498 | | |
| | WEIGHT 0.167 LB/FT | SIZE A | DWG. NO. UG-1-FL-487-ST-014 | REV A |
| | DOCUMENT CONTROL NUMBER UG-1-EN-001-FR-(111416) | ASTM D1056 2A4 ASTM D2000 N/A | DR. BY L. CLARK | DATE 1/4/2017 |