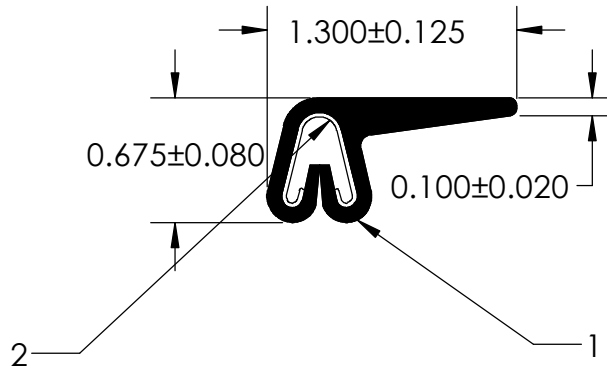
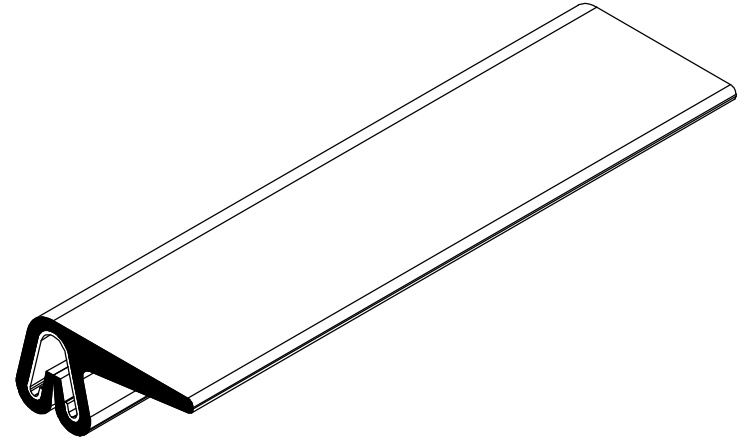


NOTES:

- 1) CLOSED CELL SPONGE RUBBER (DENSITY 0.725 G/CM³)
- 2) SD-487 SPRING STEEL (0.030 LB/FT)



SD-496



UNI-GRIP, INC.

9823 STATE ROUTE 53 N
UPPER SANDUSKY, OHIO 43351

PROPRIETARY AND CONFIDENTIAL: THE INFORMATION CONTAINED IN THIS DRAWING IS THE SOLE PROPERTY OF UNI-GRIP, INC. ANY REPRODUCTION IN PART OR AS A WHOLE WITHOUT THE WRITTEN PERMISSION OF UNI-GRIP, INC. IS PROHIBITED.		UNLESS OTHERWISE SPECIFIED: DIMENSIONS ARE IN INCHES TOLERANCES PER ARPM CLASS 3		TITLE: <p style="text-align: center; font-size: 1.2em;">SD-496</p>	
DOCUMENT CONTROL NUMBER UG-1-EN-001-FR-(111416)		WEIGHT <p style="text-align: center; font-size: 1.2em;">0.118 LB/FT</p>		SIZE <p style="text-align: center; font-size: 1.5em;">A</p>	
ASTM D1056 <p style="text-align: center; font-size: 1.2em;">2A4</p>		ASTM D2000 <p style="text-align: center; font-size: 1.2em;">N/A</p>		DWG. NO. <p style="text-align: center; font-size: 1.2em;">UG-1-FL-487-ST-013</p>	
P:\Engineering\Prints\Flap Seals\SD-496 UG-1-FL-487-ST-013		SCALE: 1:1		DR. BY L. CLARK DATE 1/3/2017 SHEET 1 OF 1	